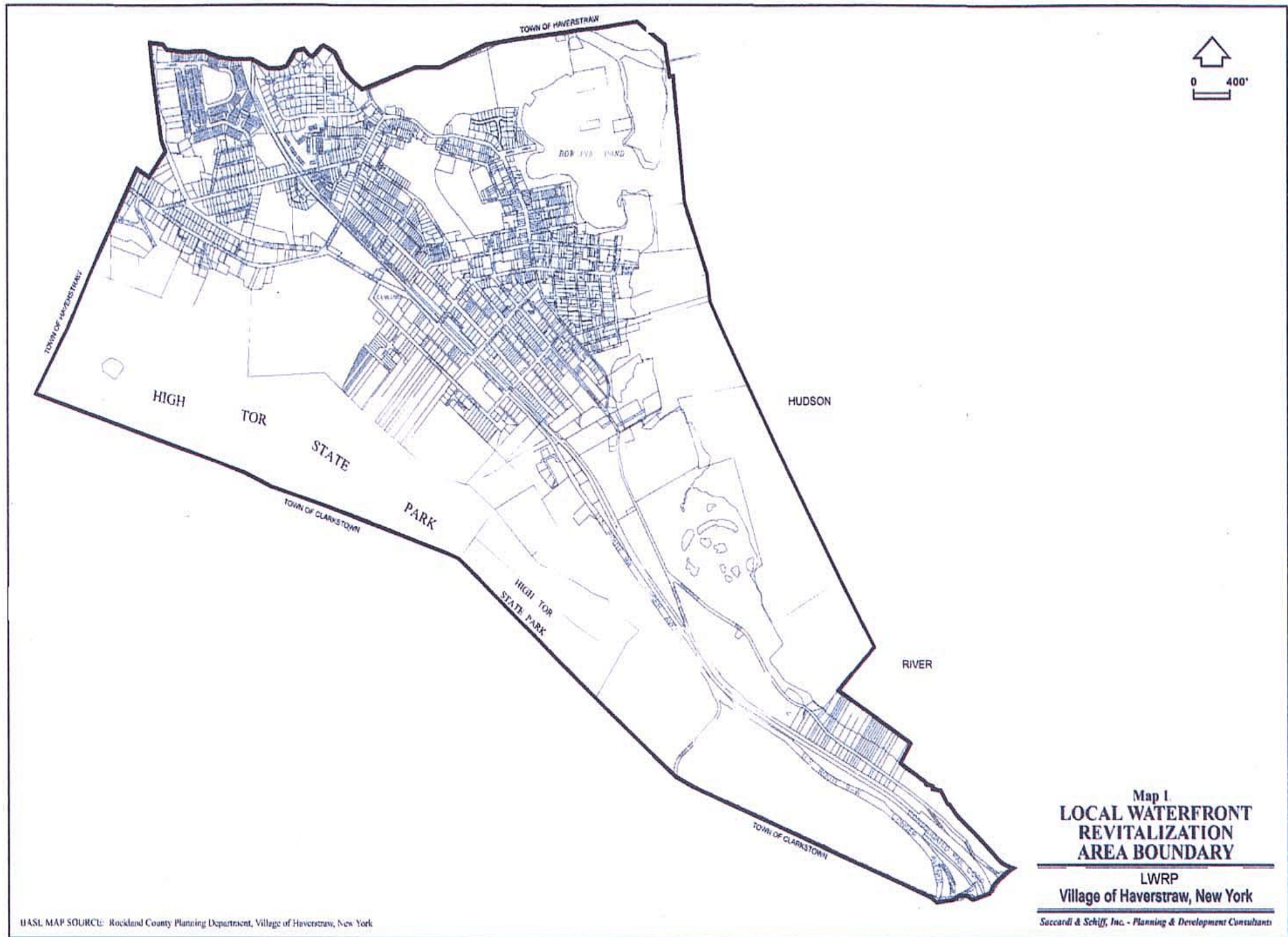
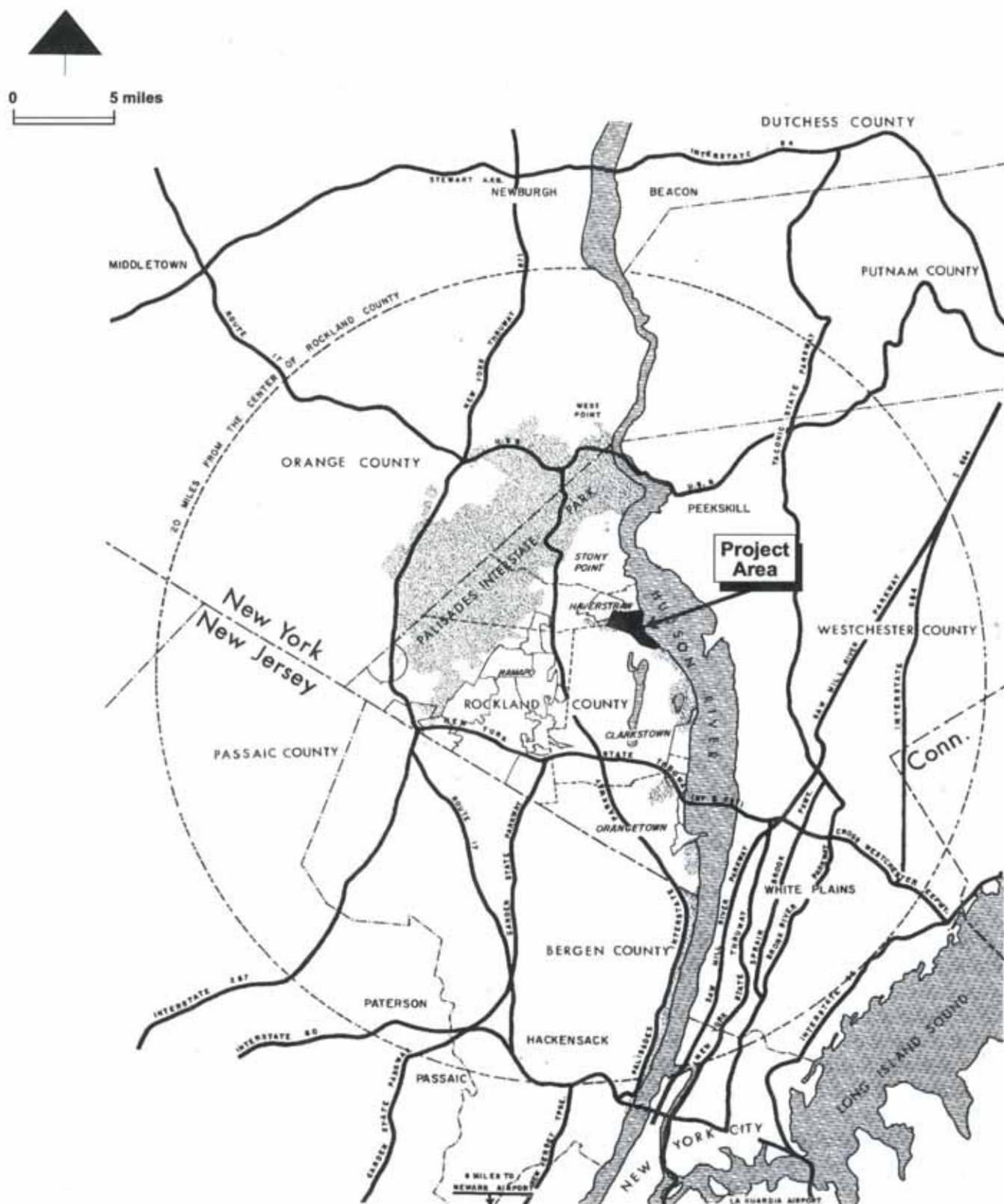


**Map 1 Local Waterfront Revitalization Area Boundary**



# Map 1A Regional Setting



## Map 1A REGIONAL SETTING OF THE VILLAGE OF HAVERSTRAW

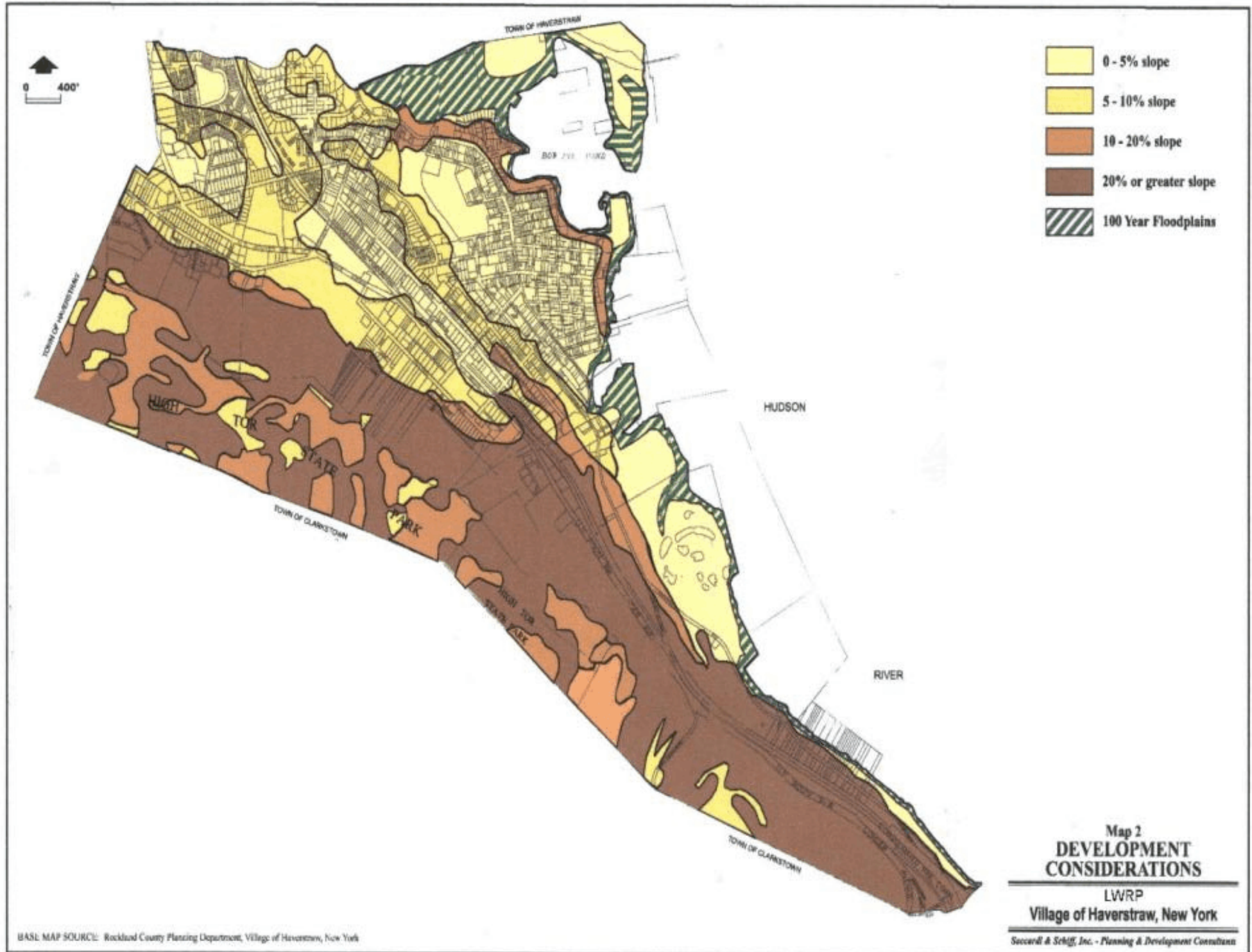
LWRP  
Village of Haverstraw, New York



Map 1B General Land and Water Uses

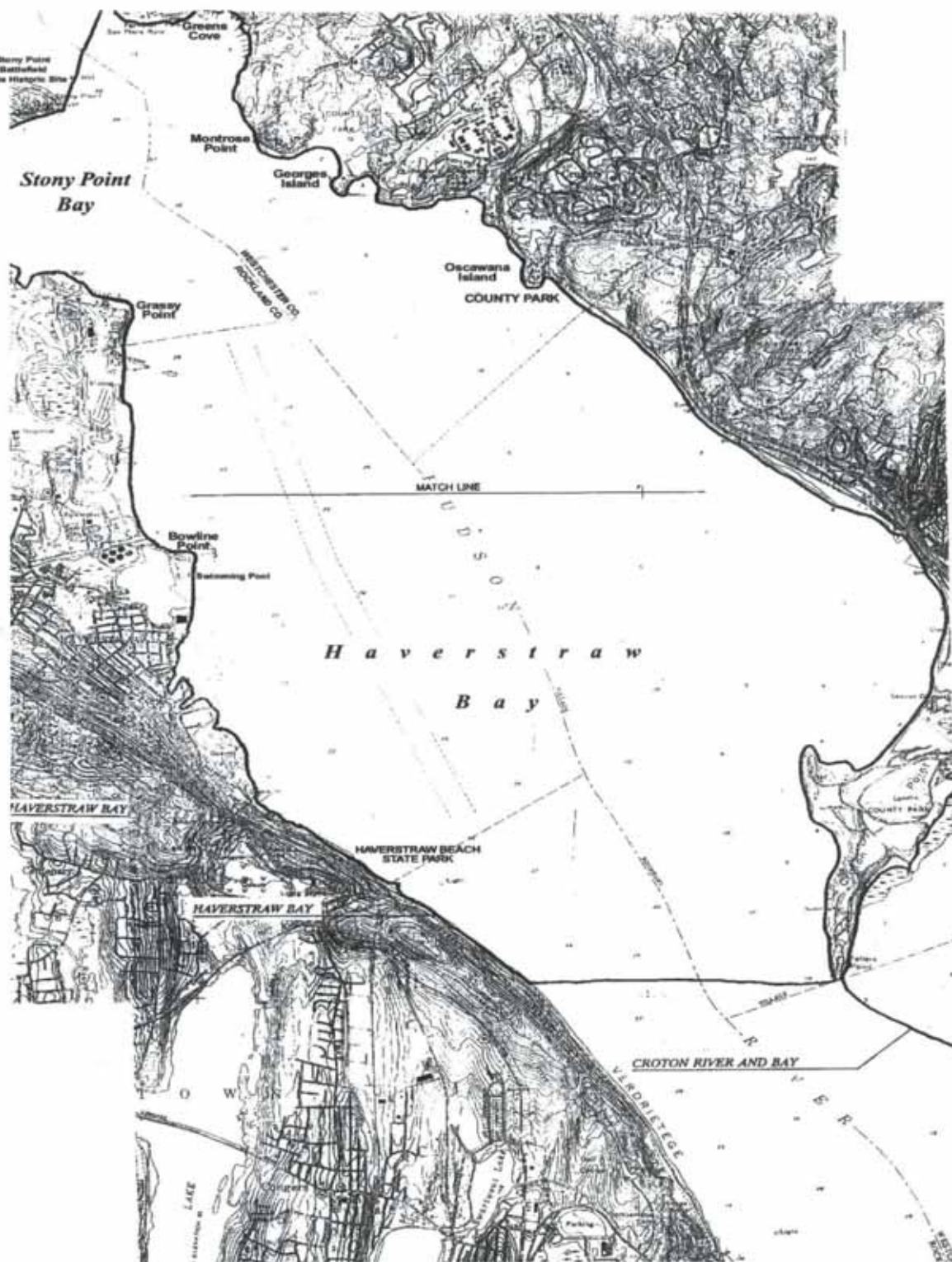


## Map 2 Development Considerations





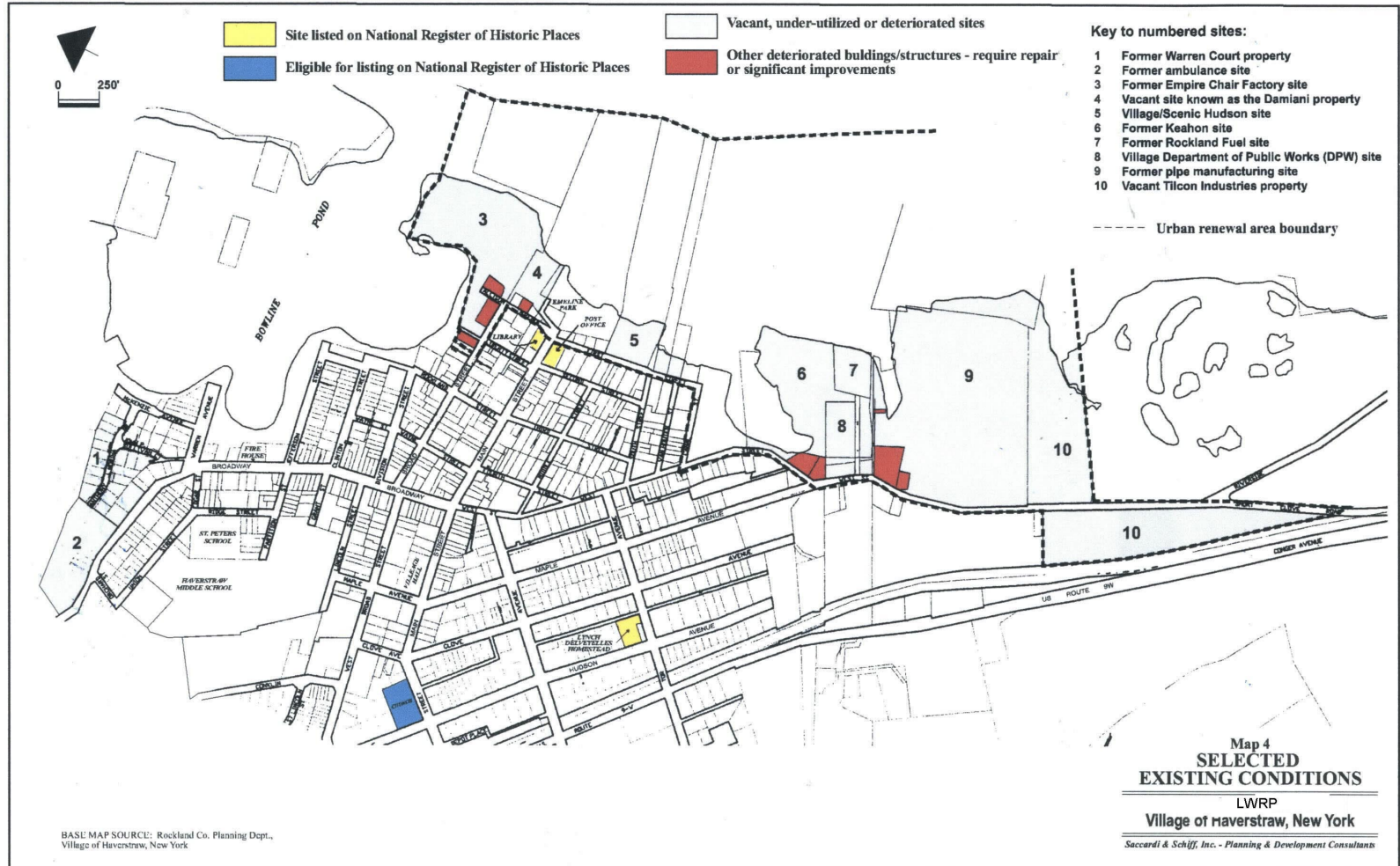
Map 3 Haverstraw Bay Coastal Area



Map 3  
**HAVERSTRAW BAY  
COASTAL AREA**

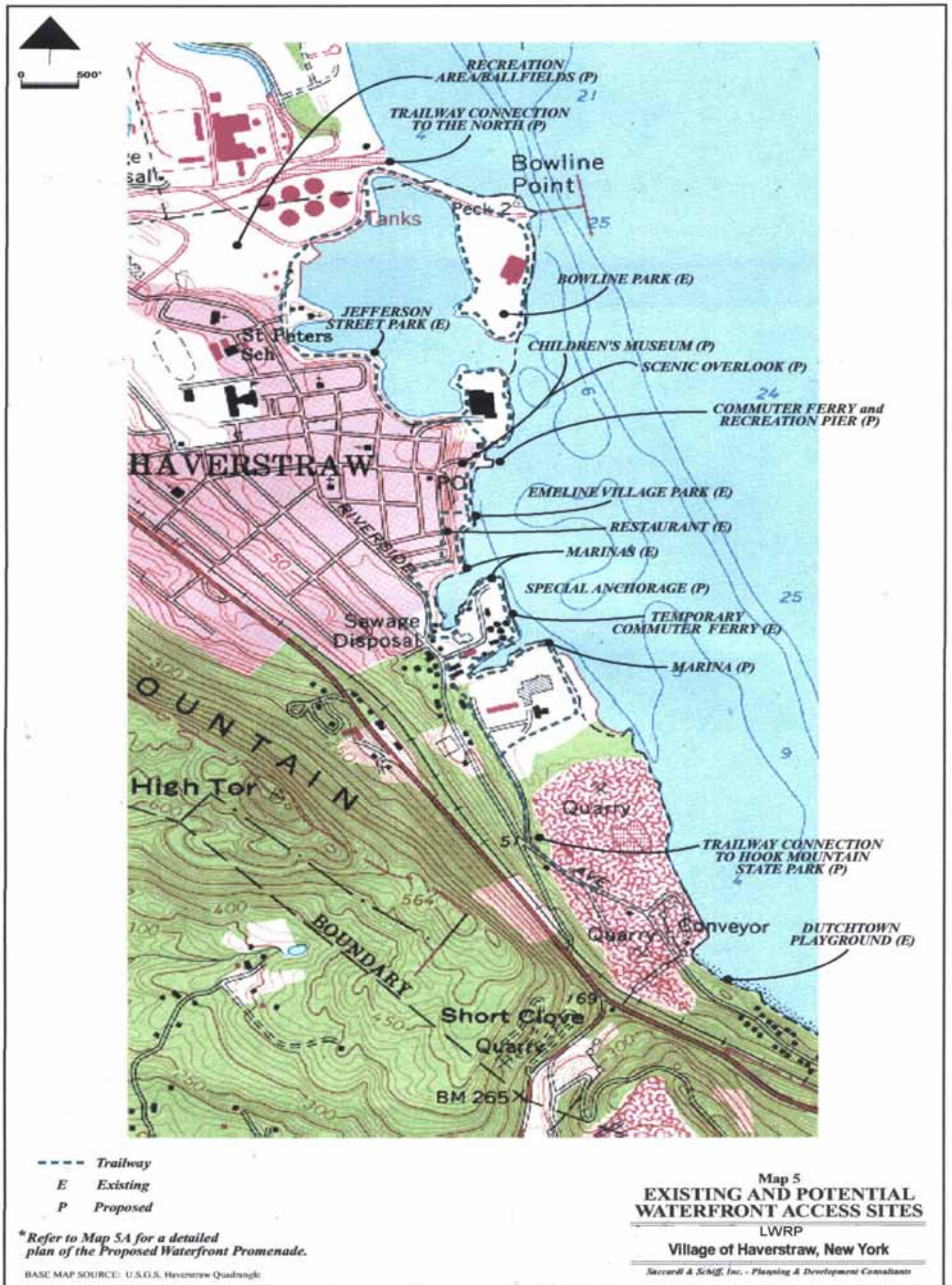
LWRP  
Village of Haverstraw, New York

## Map 4 Selected Existing Conditions





### Map 5 Existing and Potential Waterfront Access Sites





**Map 5A**  
**PROPOSED WATERFRONT PROMENADE**  
**LWRP**  
**Village of Haverstraw, New York**

*Saccardi & Schiff, Inc. - Planning & Development Consultants*

**Legend:**

- Major Shade Tree
- Metal & Wood Slat Bench
- Metal Lightpole
- Wood Bollards -12" DIA./24" HT.
- 1:2 Stone Rip-Rap
- Stl. Sheetpile Seawall/P.C. Conc. Cap w/ Metal Handrail
- Bituminous Paving/Wood Edge Each Side
- Brick Paving
- Scored Concrete Paving
- Wood Trellised Pavilion or Landmark Beacon
- Wood Deck/Boat Dock

**NOTE: ENGINEERING SURVEY KEY**

Edge Condition Zone (Exist.) per McLaren Engineers Report Dated 10 March, 2000

Edge Condition Section (Exist.) per McLaren Engineers Report Dated 10 March, 2000

**Map Labels:**

- SOUTH RESIDENTIAL ENTRY
- CENTRAL RESIDENTIAL ENTRY
- WEST STREET STAIR INFORMATION/RESTROOMS
- WEST STREET
- MAPLE AVENUE
- KAYAK LAUNCH
- MARINA PLAZA LANYARD POLE DOCK ACCESS
- MARINA
- CANOE & KAYAK DOCK
- ELK'S CLUB PARKING
- ELK'S CLUB
- ELK'S DRIVE OVERLOOK & STAIR HISTORIC MARKER & SEATING
- EMELINE PARK OVERLOOK:
  - MAIN STREET TERMINUS
  - LANDMARK LANYARD POLE
  - INFORMATION PAVILIONS
  - CAFE TERRACE/RESTROOMS
- MUSEUM FACILITY
- DIVISION STREET & HISTORIC MARKER
- ROCKLAND STREET
- CLINTON ST.
- PLAY AREA COURT GAMES
- EXISTING TRAIL
- BOWLINE POND
- LIBERTY STREET OVERLOOK/TRAIL ENTRY HISTORIC MARKER/SEATING
- TRAIL CONNECTION AT EXISTING ROADWAY
- ALLISON STREET PORTAL RESIDENTIAL ENTRY
- BOAT DOCK
- BOAT HOUSE
- PAVILION/SEATING
- BOULEVARD PLAZA
  - LANDMARK LANYARD POLE
  - OVERLOOK SEATING
- SOUTH OVERLOOK PAVILION & SEATING
- BRIDGE PLAZA OVERLOOK SEATING
- PEDESTRIAN BRIDGE METAL ARCH/WOOD DECK
- OVERLOOK PROMENADE LANDMARK BEACON
- HUDSON OVERLOOK PAVILION & SEATING
- EMELINE PARK: PICNIC LAWN OVERLOOK & FLAGPOLE
- BOAT DOCK
- OVERLOOK PROMENADE LANDMARK BEACON
- EMELINE PARK: ARRIVAL PLAZA & PARKING
- BOAT RAMP
- RECREATION/FISHING PIER
- FOUNTAIN PLAZA
- TOT PLAY
- LIBERTY ST.
- ALLISON STREET
- SITE 'D' RESIDENTIAL/COMMERCIAL PUBLIC PARKING
- PICNIC GROVE
- PRIVETTE
- FERRY PAVILION SEATING/TICKETING
- LANDMARK BEACON: OVERLOOK SEATING
- HUDSON OVERLOOK PAVILION & SEATING
- SITE 'C' MIXED USE/RESIDENTIAL
- BOWLINE OVERLOOK PAVILION & SEATING

**Map 5A**  
**PROPOSED WATERFRONT**  
**PROMENADE**

---

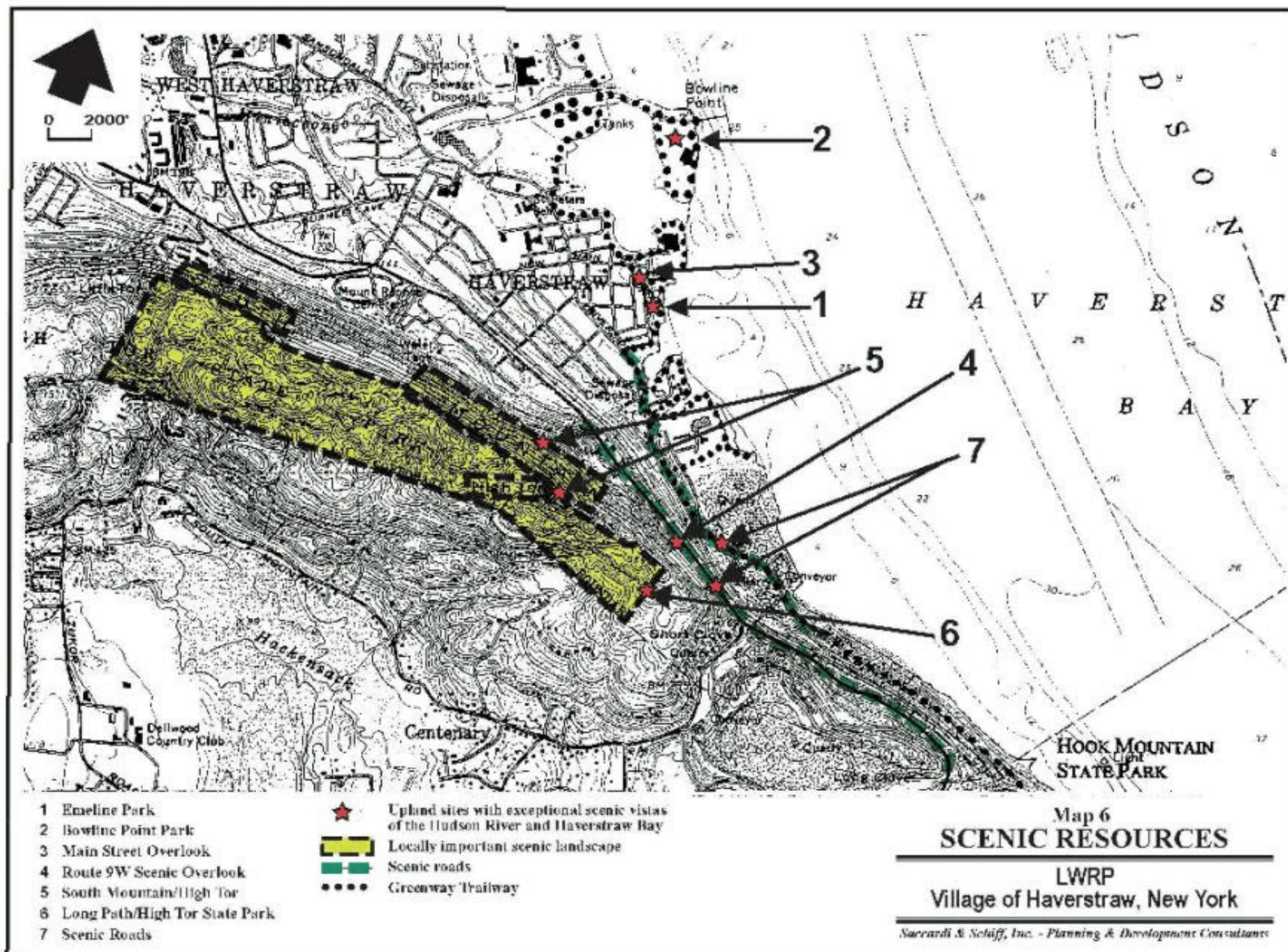
**LWRP**  
**Village of Haverstraw, New York**

---

*Saccardi & Schiff, Inc. - Planning & Development Consultants*

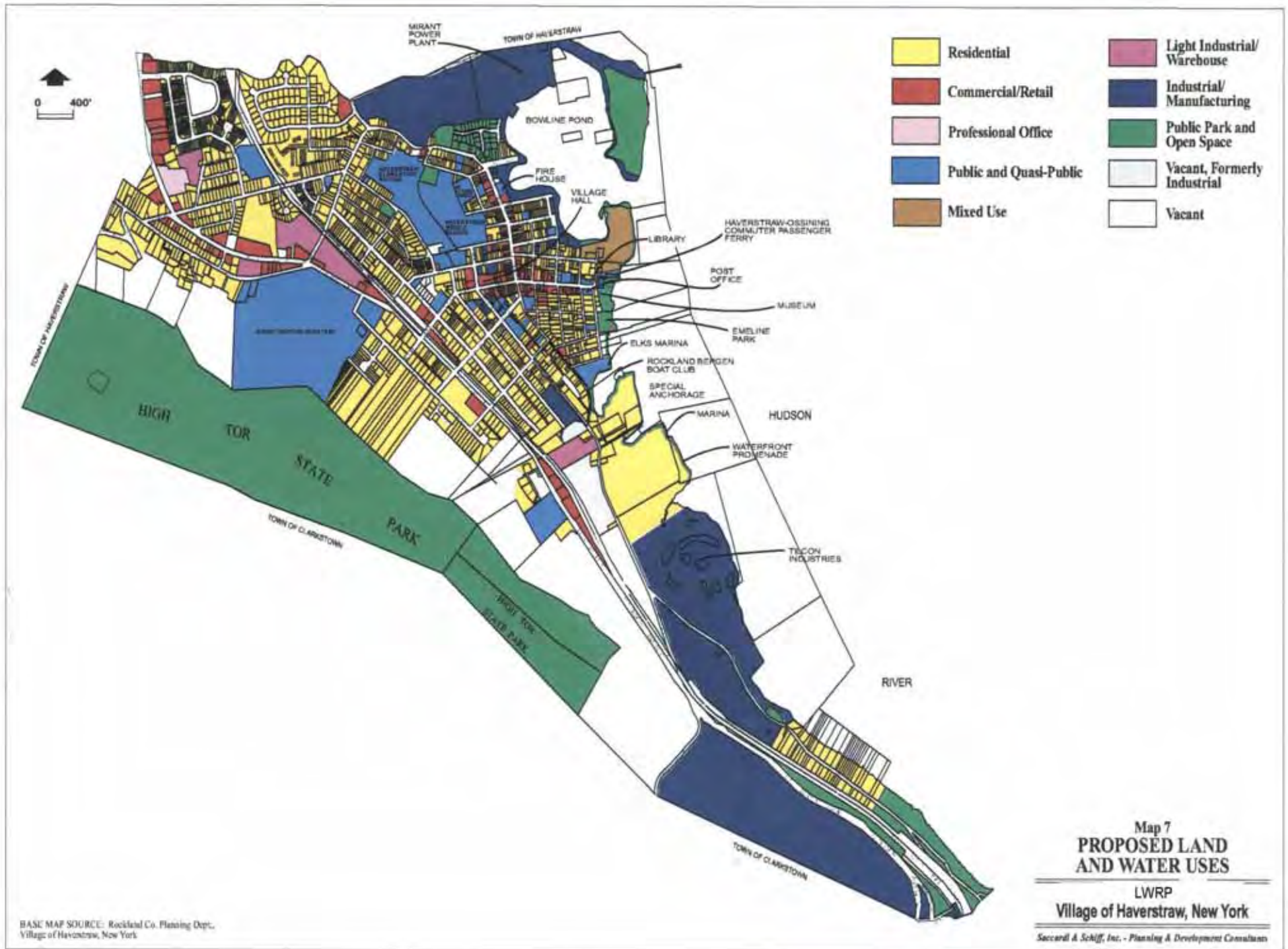


Map 6 Scenic Resources



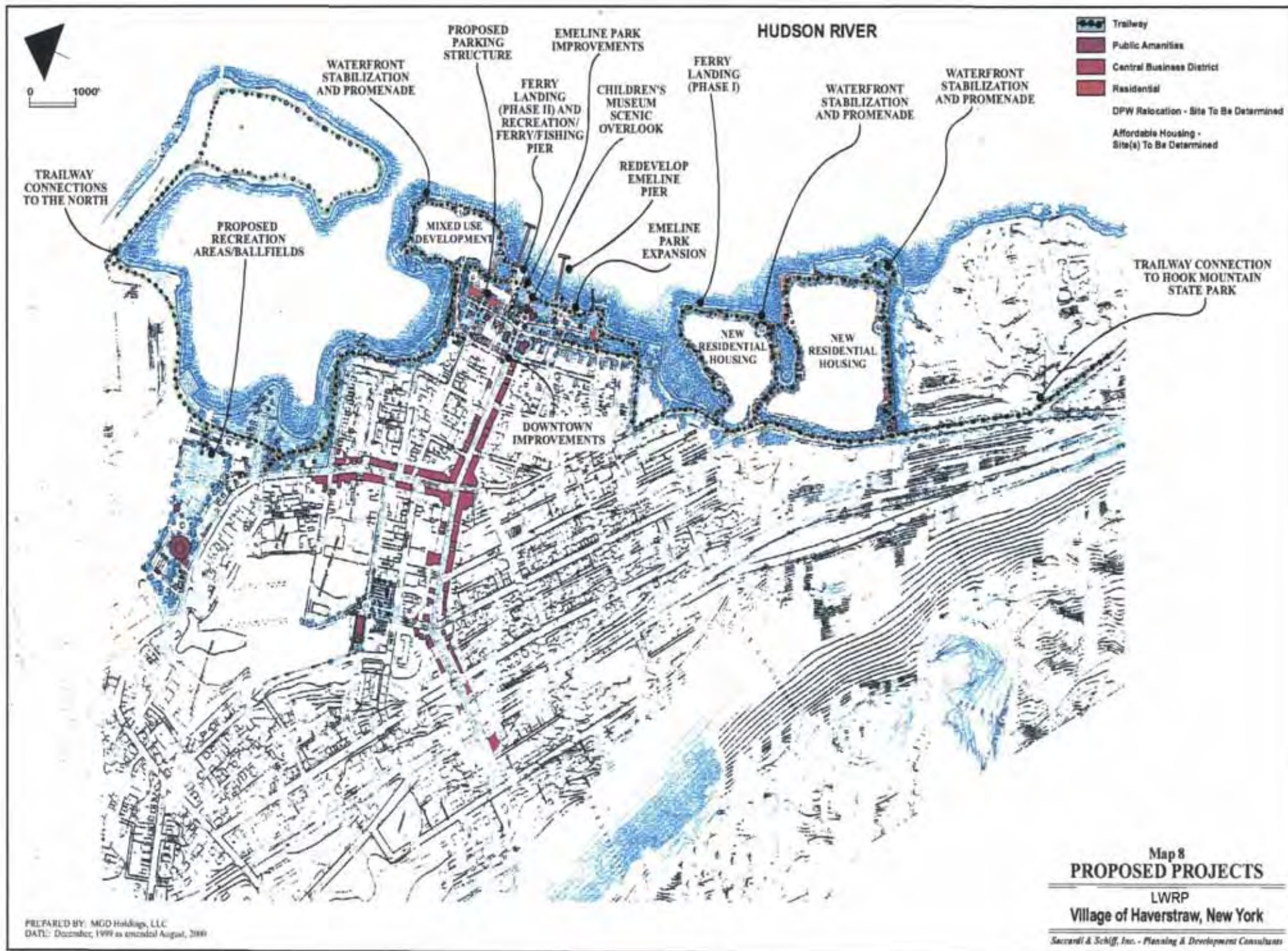


**Map 7 Proposed Land and Water Uses**



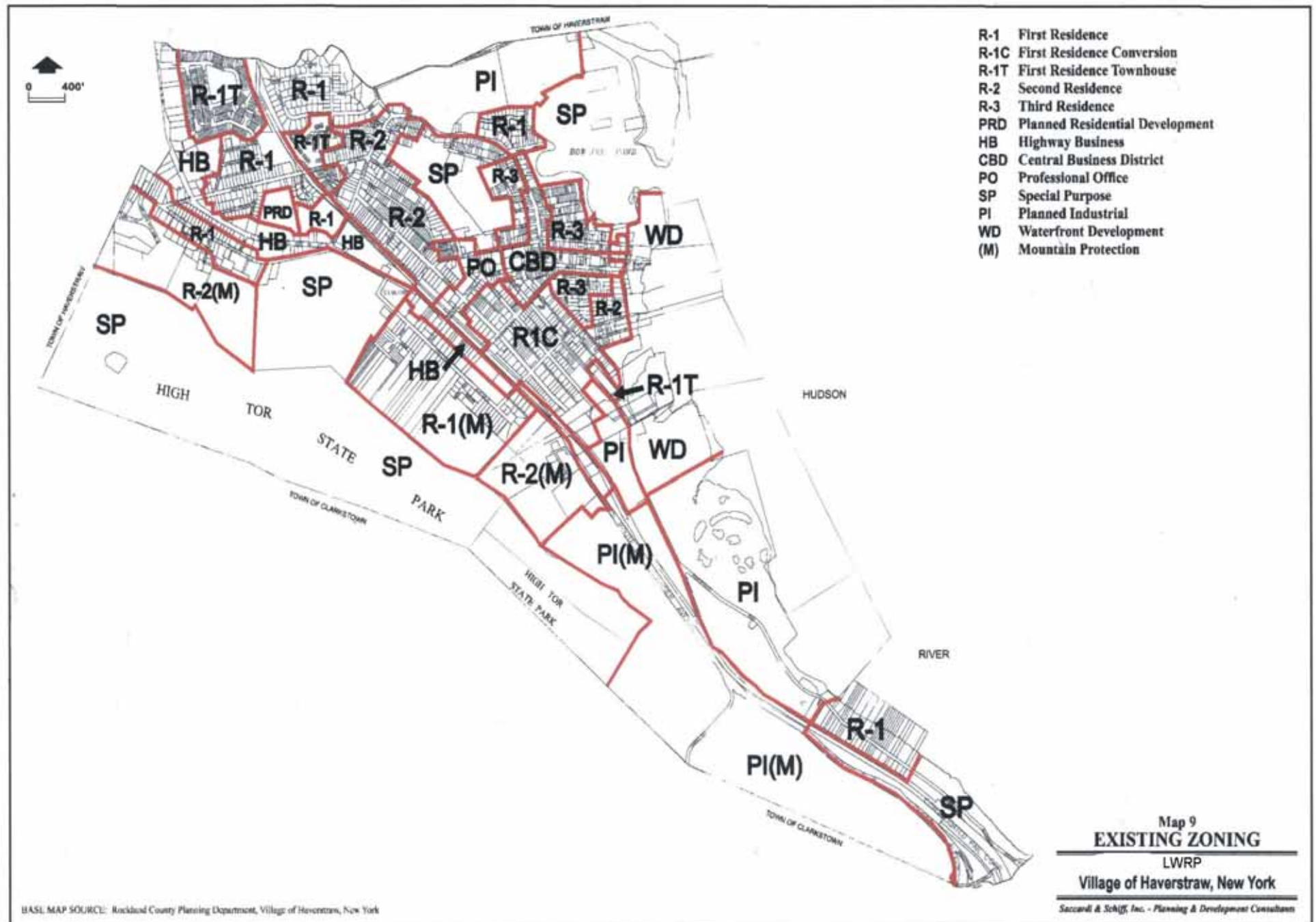


Map 8 Proposed Projects





## Map 9 Existing Zoning





## Map 10 Proposed Waterfront Zoning Amendments

